



FOR NEW EQUIPMENT SALES, CALL
800.958.2555
 TO SPEAK WITH AN ALTEC REPRESENTATIVE
 or visit us online at altec.com

 **Altec**
 TELESCOPIC ARTICULATING
 AERIAL DEVICE

FEATURES

- Telescopic Articulating Aerial Device
- Compensated Articulating Arm
- Hydraulic Boom Extension
- Altec ISO-Grip® Control System
- Low Power Fiber Optic Control System
- Fully Metered 4-Function, Single-Handle Upper Control
- Platform Access from Ground
- Composite Platform Mounting Bracket
- Insulating, ANSI Category C
- Hydraulic Platform Leveling System
- Emergency Lowering Valve at Platform
- Platform Leveling at Upper and Lower Controls
- 180° Platform Rotator
- Tool Circuit at Platform
- Open-Center Hydraulic System
- Easily Mounted on 19,500 lb (8,845 kg) GVWR Chassis
- Outrigger Boom Interlock System (with Outrigger Option)
- Outrigger Motion Alarm (with Outrigger Option)
- Back Up Alarm

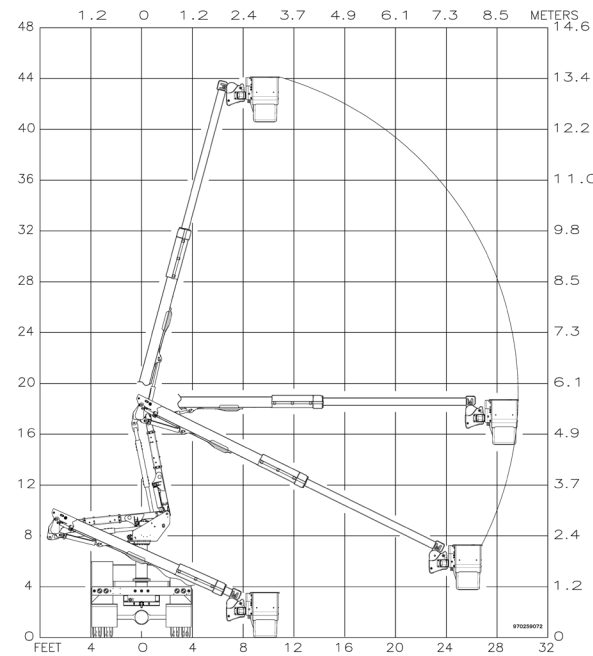
OPTIONS

- ISO-Boom Offering ANSI Category C Isolation with Boom Retracted
- Outriggers, Vertical
- Hybrid Adaptation Available with Standard Electronic Systems
- Secondary Stowage
- Engine Start/Stop
- Platform Cover
- Tool Circuit at Tailshelf
- 24 x 24 x 42 in (610 x 610 x 1067 mm) Platform
- Altec Platform Load Monitoring

Recommended safety equipment, available through Altec Supply, include a platform liner, fall protection system, wheel chocks and outrigger pads (with outrigger option).

SPECIFICATIONS	Ground to Bottom of Platform* (at Reach from Centerline)	40.6 ft (12.4 m) 10.9 ft (3.3 m)
	Working Height	45.6 ft (13.9 m)
	Maximum Side Reach (at Platform Height)	29.7 ft (9.1 m) 15.2 ft (4.6 m)
	Platform Capacity	400 lb (181.4 kg)
	Platform Dimensions (End-Mount)	24 x 30 x 42 in (610 x 762 x 1,067 mm)
	Articulating Arm Articulation	-5 to 79°
	Upper Boom Articulation	-25 to 75°
	Stowed Travel Height	10.3 ft (3.1 m)
	Rotation	Continuous
	Weight of Machine**	2,543 lb (1,153 kg)
*Based on a 40 in (1016 mm) chassis frame height. ** Weight does not include mounting frame or outriggers.		

REACH DIAGRAM



INCREASED SIDE REACH
29.7 FT (9.1 M)



INCREASED WORKING HEIGHT
45.6 FT (13.9 M)



ISO-BOOM OPTION
FOR ADDED DIELECTRIC INTEGRITY



FIBER OPTIC CONTROLS
WITH FEWER HOSES AND VALVES



For more complete information on Altec products and services, visit us on the web at www.altec.com. Material and specifications are subject to change without notice. Featured units in photos may include optional features. Please contact an Altec representative for all available options. Altec® and the Altec logo are registered trademarks of Altec Inc. in the United States and various other countries and may not be used without permission.
© 2020 Altec Inc. All Rights Reserved. AIOSAT40G-0220-v1